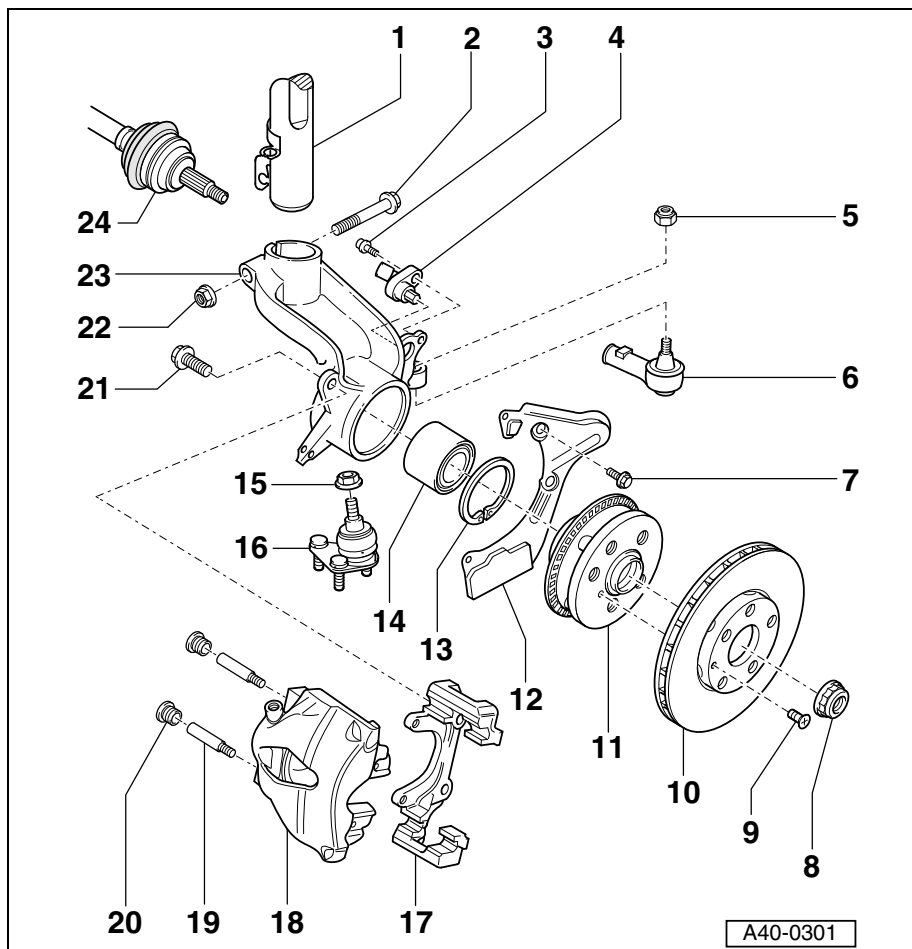


40-18 Front Suspension

Front Wheel Bearing Housing

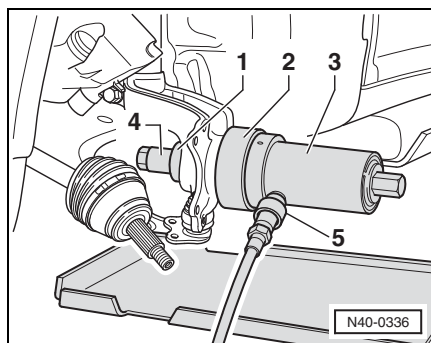
FRONT WHEEL BEARING HOUSING

1. **Suspension strut**
2. **Bolt**
3. **Bolt**
 - 8 Nm (71 in-lb)
4. **ABS wheel speed sensor**
5. **Self-locking nut**
 - Always replace
 - Tightening torque:
 - 3.2L roadster: 75 Nm (55 ft-lb)
 - All other models: 45 Nm (33 ft-lb)
6. **Ball joint (tie rod end)**
7. **Bolt**
 - 10 Nm (7 ft-lb)
8. **Self-locking 12-point nut**
 - Always replace
 - See **Drive Axle, removing and installing**, earlier in this repair group
9. **Screw**
 - 4 Nm (35 in-lb)
10. **Brake disc, ventilated**
11. **Wheel hub**
 - With wheel speed sensor rotor welded to hub
12. **Backing plate**
13. **Snap ring**
 - Check for proper seating
14. **Wheel bearing**
 - Before installing wheel bearing, coat entire inner surface of bore in wheel bearing housing with Molypaste (part number AOS 115 000 01)
 - A grease packet containing 3 grams of molypaste is included with the Audi-supplied wheel bearing kit
15. **Self-locking nut**
 - Always replace
 - Tightening torque:
 - 3.2L roadster: 150 Nm (111 ft-lb)
 - All other models: 75 Nm (55 ft-lb)
16. **Ball joint**
17. **Brake carrier**
18. **Brake caliper**



19. **Guide pins**
 - 25 Nm (18 ft-lb)
20. **Protective cap**
21. **Ribbed bolt**
 - 125 Nm (92 ft-lb)
 - Clean ribs on underside of bolt head
 - Do not twist or kink brake line when removing or installing
22. **Self-locking nut**
 - 60 Nm (44 ft-lb) plus 90° (¼ turn)

23. **Wheel bearing housing**
 - Remove housing to remove/install wheel bearing
 - Wheel bearing can also be removed/installed with housing still on vehicle using special tools. See **Wheel Bearing, special tools for removing with housing installed on vehicle**.
24. **Drive axle**



- ◀ **Wheel bearing, special tools for removing with housing installed on vehicle.**
1. Thrust bolt E-15
 2. Support E-40
 3. Hollow piston cylinder HZK-15
 4. Special nut E-8-214 and pull rod
 5. High pressure hose with quick release coupling attached to foot pump (VAG 1389A)