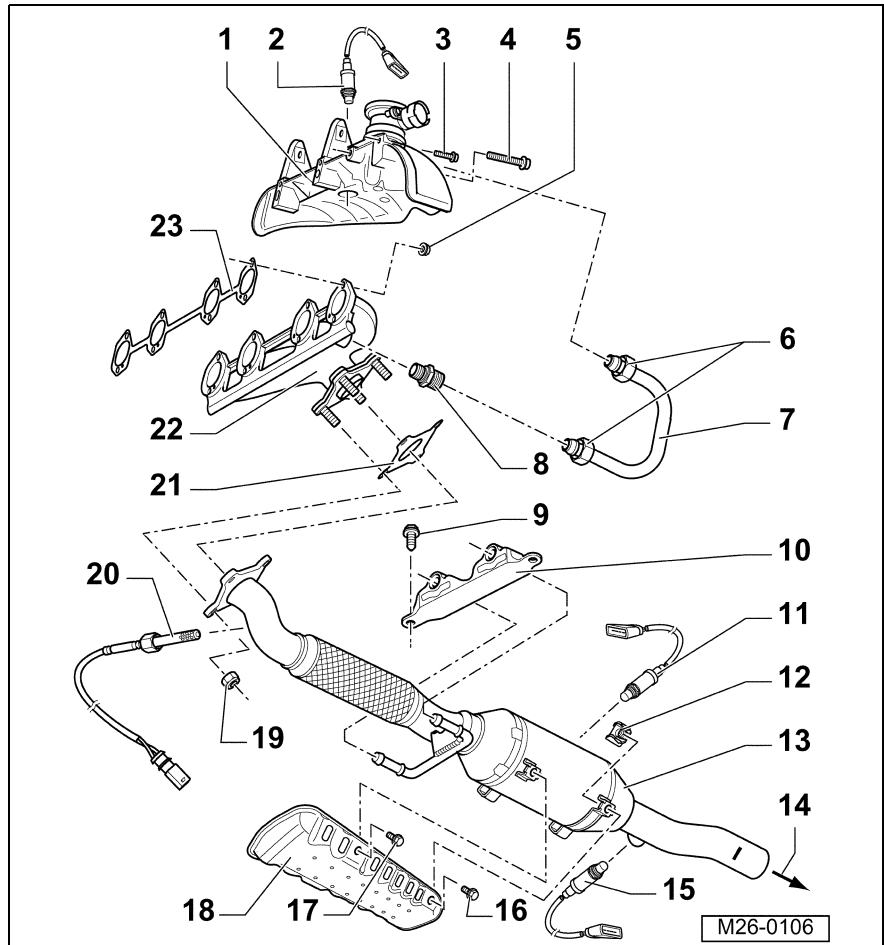


## Exhaust manifold and catalytic converter (2.0L BBW engine)

1. **Warm air collector plate (stove)**
2. **Heated Oxygen Sensor (HO2S), before (pre) catalytic converter (G39) (B1S1)**
  - Tighten to 50 Nm (37 ft-lb)
  - If seal leaks, cut off and replace
  - Lubricate threads only with high temperature anti-seize
  - Do not allow anti-seize compound into the slots on the sensor body
  - See **Oxygen sensor, removing and installing**
  - See **Harness connectors, installed position and identification (2.0L BBW engine)**
3. **Bolt**
  - Tighten to 10 Nm (7 ft-lb)
4. **Bolt**
  - Tighten to 25 Nm (18 ft-lb)
5. **Nut**
  - Tighten to 25 Nm (18 ft-lb)
  - Always replace
6. **Flare nut**
  - Tighten to 40 Nm (30 ft-lb)
7. **Connecting pipe**
  - For secondary air injection
8. **Union**
  - Tighten to 60 Nm (44 ft-lb)
9. **Bolt**
  - Tighten to 25 Nm (18 ft-lb)
10. **Front support**
11. **Oxygen Sensor (O2S), center catalytic converter (G465) (B1S2)**
  - Tighten to 50 Nm (37 ft-lb)
  - If seal leaks, cut off and replace
  - Lubricate threads only with high temperature anti-seize
  - Do not allow anti-seize compound into the slots on the sensor body
  - See **Oxygen sensor, removing and installing**
  - See **Harness connectors, installed position and identification (2.0L BBW engine)**
12. **Speed nut**
  - Slide on from front
13. **Front exhaust pipe with catalytic converter**
  - With anti-vibration element



14. **Exhaust flow**
    - Outlet to center muffler
  15. **Heated Oxygen Sensor (HO2S), after (post) catalytic converter (G130) (B1S3)**
    - Tighten to 50 Nm (37 ft-lb)
    - If seal leaks, cut off and replace
    - Lubricate threads only with high temperature anti-seize
    - Do not allow anti-seize compound into the slots on the sensor body
    - See **Oxygen sensor, removing and installing**
    - See **Harness connectors, installed position and identification (2.0L BBW engine)**
  16. **Bolt**
    - Tighten to 5 Nm (44 in-lb)
  17. **Bolt**
    - Tighten to 10 Nm (7 ft-lb)
  18. **Heat shield**
    - Ensure all fasteners are tight
  19. **Nut**
    - Tighten to 25 Nm (18 ft-lb)
    - Always replace
  20. **Exhaust Gas Temperature (EGT) sensor 1 (G235)**
    - Tighten to 45 Nm (33 ft-lb)
  21. **Gasket**
    - Always replace
  22. **Exhaust manifold**
  23. **Gasket**
    - Always replace
- Anti-seize compound, (not shown)**
- High temperature
  - Volkswagen recommended anti-seize compound for all operations, G 052 112 A3
- NOTE —**  
*Volkswagen part numbers are given for reference only! Always consult with your Volkswagen Parts Department or aftermarket parts specialist for the latest parts information.*